



TAKING
COOPERATION
FORWARD

 3rd Local Focus Group Meeting ProteCHt2save & Summer University Cultural Property Protection Final Presentation, Krems (Austria) 12/07/2019

 **Emergency Planning State Gallery Lower Austria**

 Donau University Krems 2019 Summer Univ.
Anna Kaiser, Emir Isovich, Florian Dietrich, Milos Jurisic, Renate Deschauer, Rosalinde Kleemaier-Wetl, Stefano Bergonzini

GUARDING HERITAGE FROM NATURAL HAZARDS



Climate change and other natural hazards pose a risk for cultural heritage assets and the people around them. ProteCHt2save is a project that works to protect the heritage and nearby populations - especially against the risk of floods. ProteCHt2save produces tools to help local officials manage risks and develop action plans for emergencies.

www.interreg-central.eu/culture



AUSTRIA	Niederösterreich
CROATIA	Jadranska Hrvatska
CZECH REPUBLIC	Praha
HUNGARY	Dél-Dunántúl
ITALY	Emilia-Romagna
POLAND	Śląskie
SLOVENIA	Vzhodna Slovenija



PROJECT BUDGET
2.15
MILLION €

ERDF FUNDING
1.79
MILLION €

WHY ARE WE HERE TODAY?

Objectives

- *Defining risk areas for an improved protection and sustainable use of CH in Central Europe susceptible to disasters and climate change impacts.*
- *Determining critical elements for CH vulnerability in the resilience and risk management process.*
- *Setting up of transnational best practices and common strategies for sustainable use and protection of CH to be integrated in joint action plans in a changing environment.*



PROJECT STRUCTURE



photos: Miloš Drdácý, Danube University Krems, Mein Bezirk



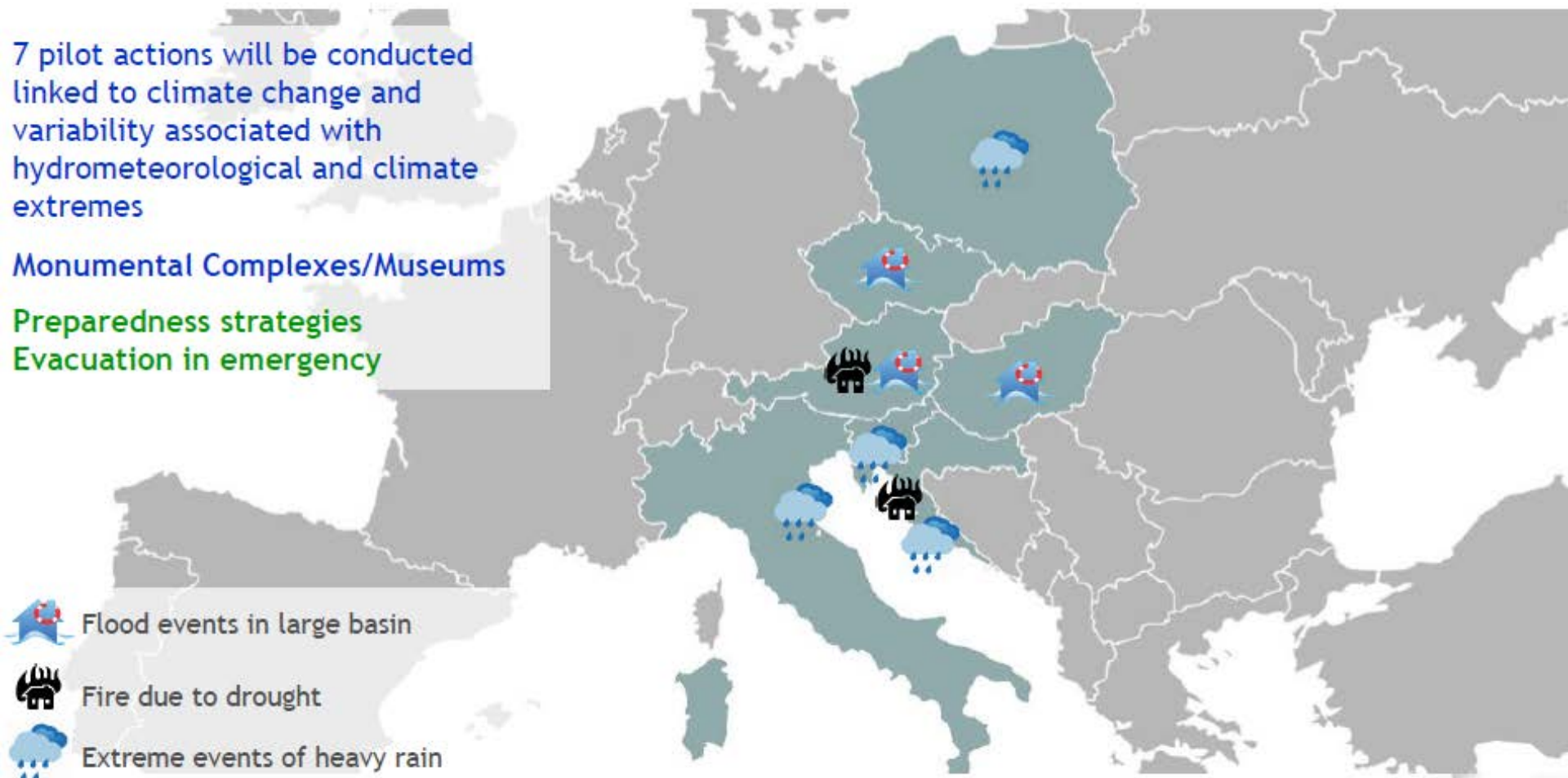
WHY ARE WE HERE TODAY?

7 pilot sites

7 pilot actions will be conducted linked to climate change and variability associated with hydrometeorological and climate extremes

Monumental Complexes/Museums

Preparedness strategies
Evacuation in emergency

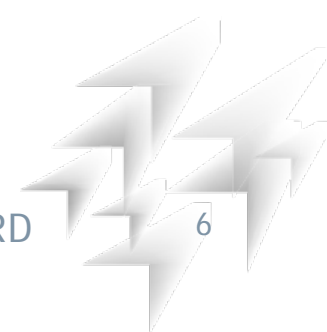


WHY ARE WE HERE TODAY?

Florence Flood 1966



Getty Images 1966, <https://www.historytoday.com/history-matters/florence%E2%80%99s-mud-angels> (05.07.2019).



WHY ARE WE HERE TODAY?

Florence Flood 1966



<https://blog.contexttravel.com/florence-flood/>



WHY ARE WE HERE TODAY?

Art Collections Dresden 2002



DPA, <https://www.lvz.de/Thema/Specials/Jahrhundertflut/Dresden/Die-Dresdner-Kunstsammlungen-die-Flut-und-ihre-Folgen> (05.07.2019).



TAKING COOPERATION FORWARD

WHY ARE WE HERE TODAY?



State Gallery NÖ

100 year flood

30 year flood



WHY ARE WE HERE TODAY?

Summer University Cultural Property Protection 2019

- Prepare for the worst (un)imaginable situation
- Develop plans & contingency plans
- Talk to possible support
 - Civilian first responders
 - Military
 - Volunteers
- Prepare, exercise and train
- Provide ideas, get feedback
- Provide suggestions



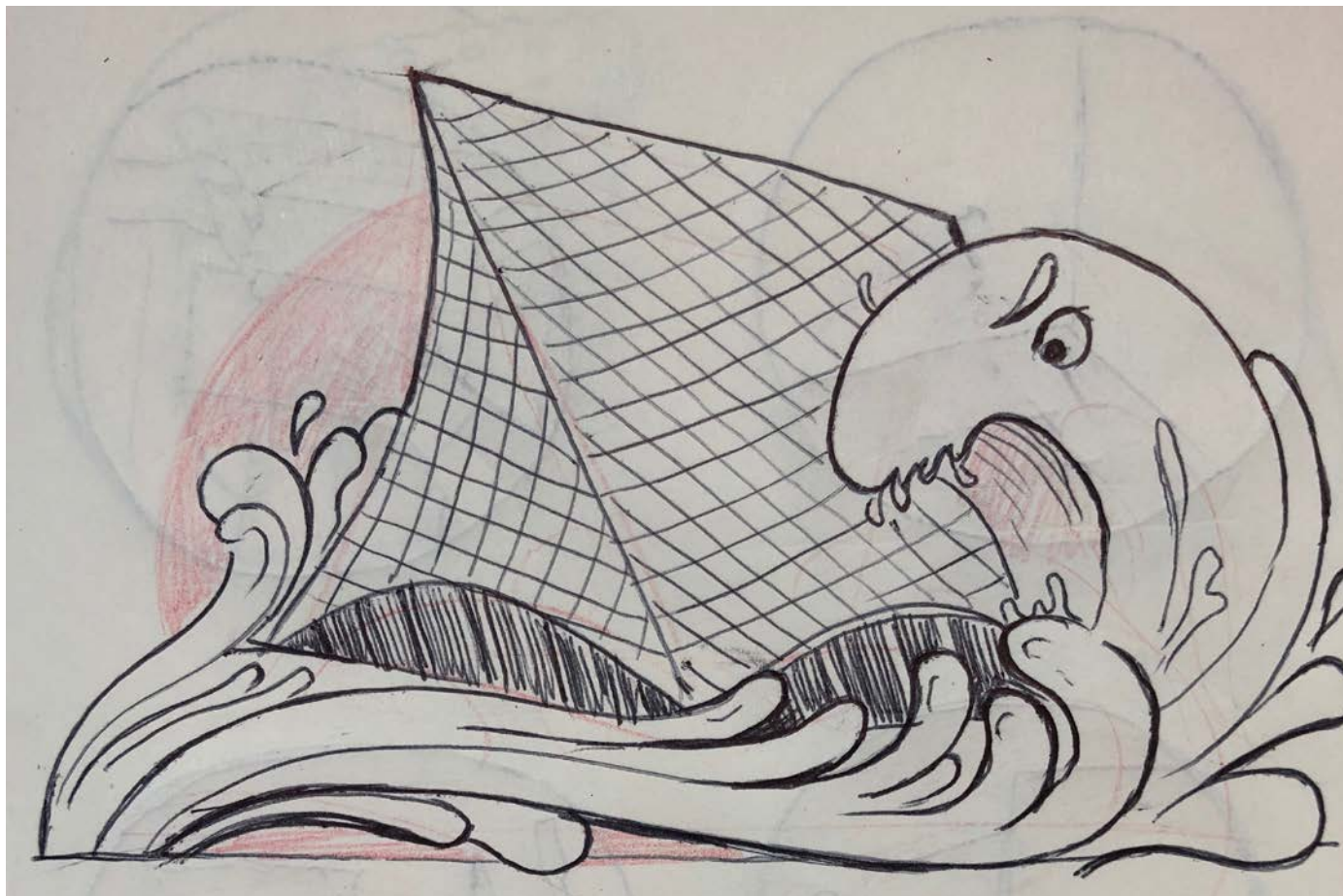
TAK

Why plan and prepare?

- Save as much as possible
- Efficiency
- Avoid forgetting important measures
- Maximise use of time in emergency and before
- Reduce stress



Why plan and prepare?



Emir Isovich 2019.



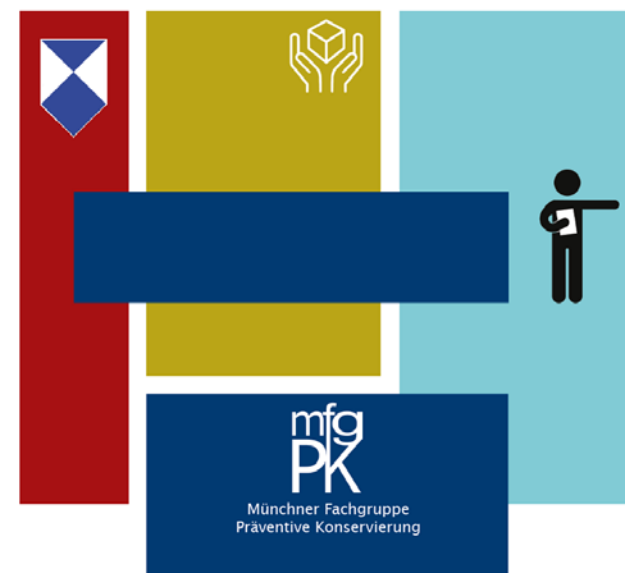
WHY PLAN AND PREPARE?



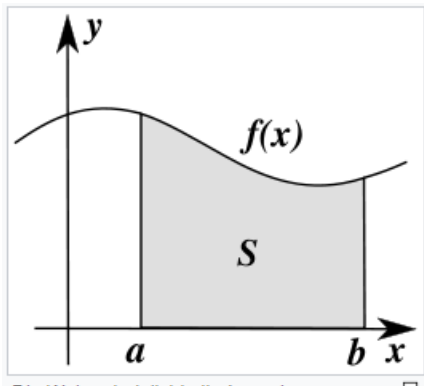
EMERGENCY PLANS AND PROCEDURES

- Risk assessment and analysis
- Assign tasks and responsibilities
- Identify storages
- Internal emergency plan and binder
- Prioritisation
- Fire department emergency binder
- Helpers
- Prepare equipment and material
- Administrative steps
- Disseminate official information
- Education and training

Umgang mit **Kunst und Kulturgut** im Notfall



Risk assessment and analysis



Fire Biblioteca Sanita' Pubblica 2014
Bruna Bisasco presentation 30 May 2017



Earthquake Emilia Romagna
Public Library 2012



Flood October 2000 Archive University of Torino
Centro Piero della Francesca
Antonella Pieri presentation 30 May 2017 - Foto: Astut (Archivio Scientifico Tecnologico Università di Torino) e Soprintendenza Archivistica e Bibliografica Piemonte e Valle d'Aosta

2016 [edit]

- 2016 São Paulo flood and mudslide
- April 18 – 2016 Houston floods
- 2016 European floods
- 2016 Oklahoma floods^{[26][27]}
- 2016 Maryland flood^{[28][29]}
- 2016 Louisiana floods^{[30][31]}

%



Risk assessment and analysis

Likelihood x Impact = Risk



1UG		damage				
		very low 1	low 2	medium 3	severe 4	critical 5
likelihood of occurrence	very unlikely 1	1	2	3	4	5
	unlikely 2	2	4	6	8	10
	likely 3	3	6	9	12	15
	often 4	4	8	12	16	20
	continuously 5	5	10	15	20	25



Risk assessment and analysis

1UG - Untergeschoss

Risk analysis 2019							
Danger	historical experience with the specific danger	likelihood of occurrence	considerations to occurrence	impact (extent of damage)	considerations to impact	Risk	suggestions
FLOOD 300 yr. Not restricted/broken mobile barrier	flood unrestricted 1991 (highest level at mt.xxx,xx over Adriatic), flood restricted mobile barriers 2002, no effects, (highest level at mt.xxx,xx over Adriatic), flood restricted mobile barriers 2013, no effects, (highest level at mt.xxx,xx over Adriatic - mobile barriers enhanced by	3	exposition rooms, technical rooms, deposits, all underground, main walls not watertight, presence of fire-smoke vents on S-side (ca 4 sq. mt.), no pumps available, backflow valves on all piping (maintenance?)	5	critical to structural stability (194m over A. not flooded) severe damage to objects, possibly critical (mechanical action, duration,contamination by + chemical action through silth)	15	continuous Monitoring; acquisition and installation of integrated fixed+mobile barrier system with upgrade (concrete + steel/aluminum), installation of water tight system at fire-smoke ventilation access, maintenance of back-flow in piping, re-arrangement of electrical wiring and utilities (incl.elevators) to ensure functioning during flood, acquisition of mobile generator and pumps, emergency plan, emergency



Risk assessment and analysis

1UG - Untergeschoss				EVALUIERUNG					
impact (extent of damage)	considerations to impact	Risk	suggestions	action taken	likelihood of occurrence (after action)	impact (after action)	Risk	riority 1 ..	Notes
5	critical to structural stability (194m over A. not flooded) severe damage to objects, possibly critical (mechanical action, duration,contamination by + chemical action through silth)	15	continuous Monitoring; acquisition and installation of integrated fixed+mobile barrier system with upgrade (concrete + steel/aluminum), installation of water tight system at fire-smoke ventilation access, maintenance of back-flow in piping, re-arrangement of electrical wiring and utilities (incl.elevators) to ensure functioning during flood, acquisition of mobile generator and pumps, emergency plan, emergency	acquisition and installation of integrated fixed+mobile barrier system with upgrade (concrete + steel/aluminum),	1	1	1	1	crowdsourcing and funding (save your cultural heritage, buy a barrier with your name)



SUGGESTION EMERGENCY PLAN LGNÖ



Internal Emergency Plan State Gallery Lower Austria



Kunstmeile Krems Betriebs GmbH
Museumsplatz 5
3500 Krems an der Donau
Österreich

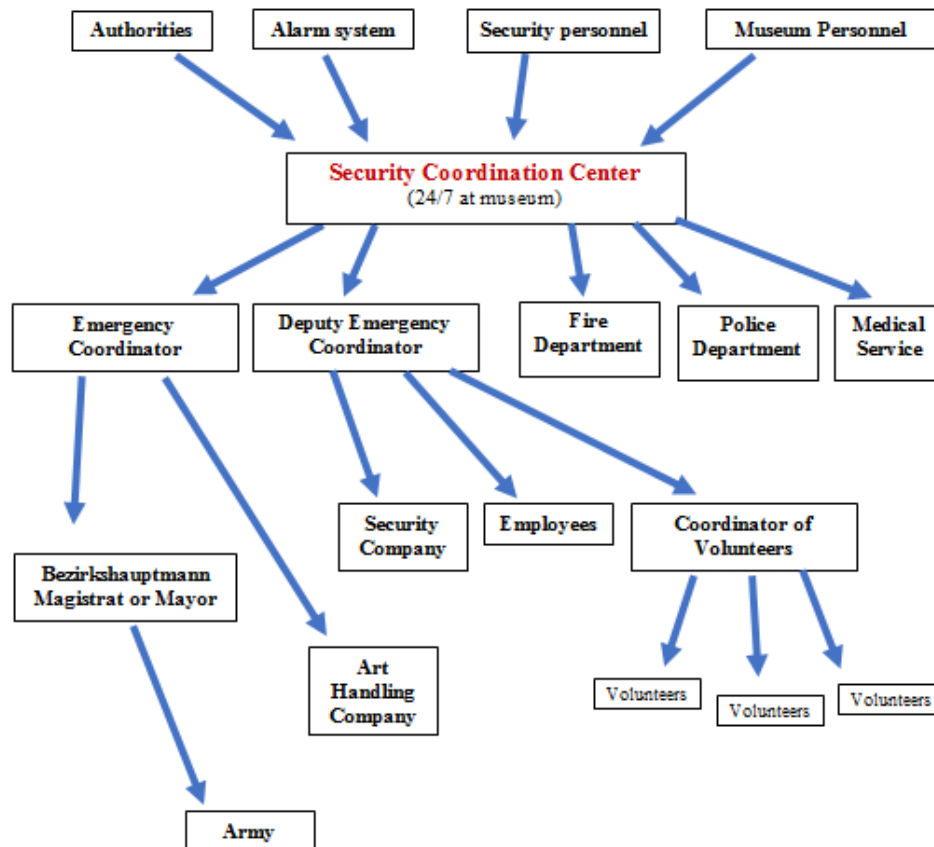
T +43 (0) 2732 908010

Updated till: 13 July, 2019



SUGGESTION EMERGENCY PLAN LGNÖ

Alarm Chain



Emir Isovich 2019.



Telephone List

Emergency team and employees:

Function	Name	Telephone no	Availability
Museum Director	xxxxx	xxxxxx	When available
Landessammlung	xxxxx	xxxxxx	When available
Emergency coordinator			always
Dept. Emergency Coordinator			always
Employee			When available
Employee			When available
Employee			When available

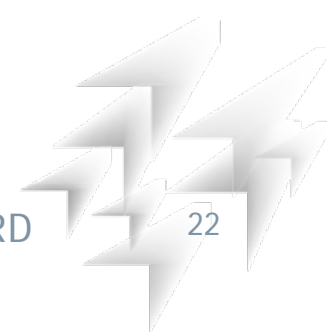
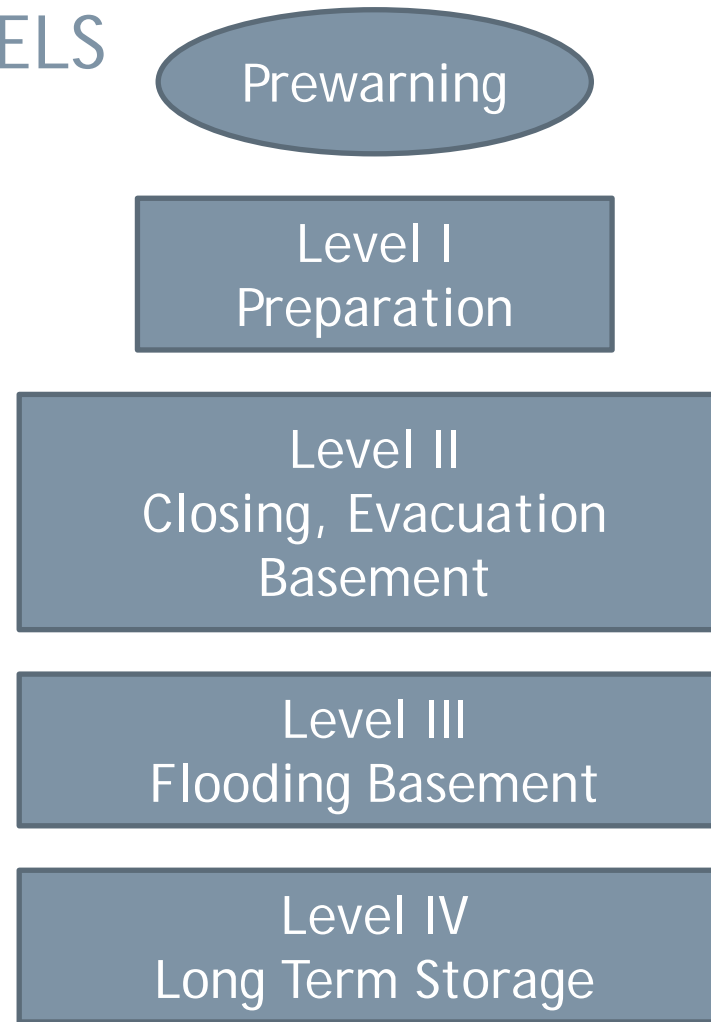
Security-company:

Function	Name	Telefon no	Availability
Responsible for museum	xxxxx	xxxxxx	always
Deputy Responsible	xxxxx	xxxxxx	always



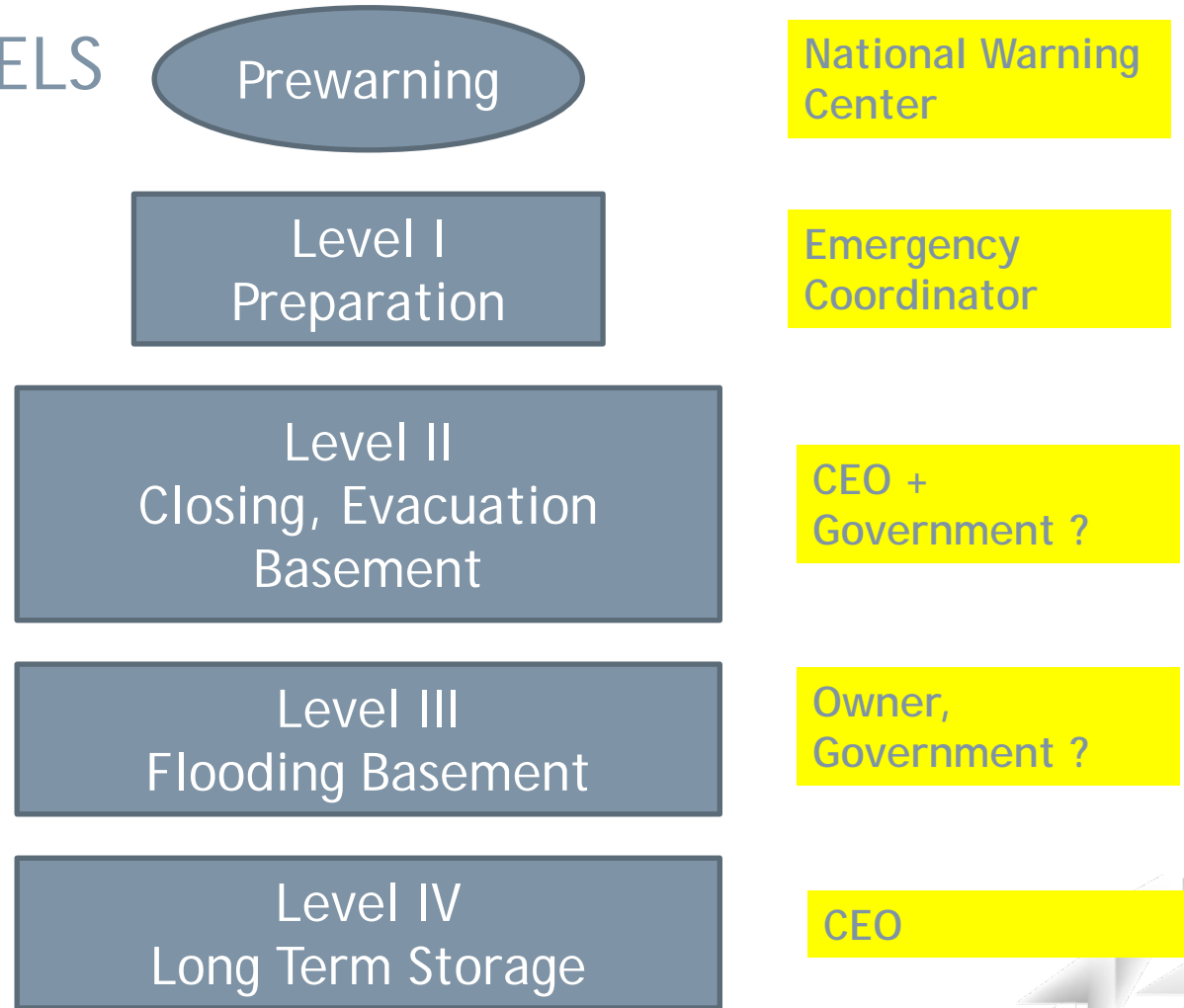
SUGGESTION EMERGENCY PLAN LGNÖ

EMERGENCY LEVELS



SUGGESTION EMERGENCY PLAN LGNÖ

EMERGENCY LEVELS



SUGGESTION EMERGENCY PLAN LGNÖ

EMERGENCY LEVELS

Prewarning

National Warning
Center

Floodmarker,
Time

Level I
Preparation

Floodmarker,
Time

Level II
Closing, Evacuation
Basement

CEO +
Government ?

Definition 194m?

Level III
Flooding Basement

Owner,
Government ?

After all clear

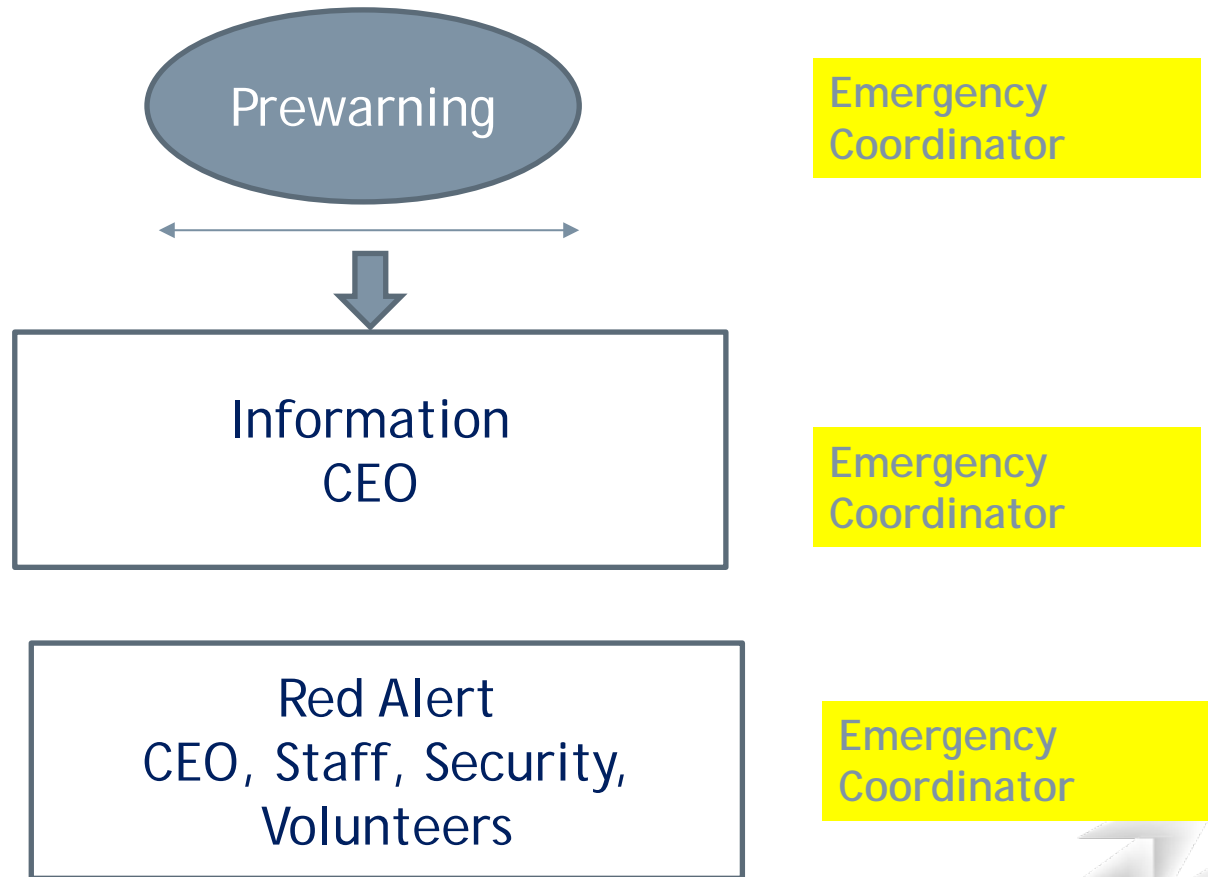
Level IV
Long Term Storage

CEO



Flood - Prewarning

National Warning
Center



SUGGESTION EMERGENCY PLAN LGNÖ

Level I

Defined Marker
Emergency Plan I
Priority List

Activate Emergency
Plan Level I

Emergency
Coordinator ?

Instruct staff

Instructor?

Check and distribute
equipment

Inventory and
packing
coordinator

Preparation of storage
facilities

Storage
responsible

Evacuation of Basement
(depot, except exhibition)

Emergency
Coordinator

All clear or go on to level II

Emergency
Coordinator



SUGGESTION EMERGENCY PLAN LGNÖ

Level II

Defined Marker
Emergency Plan II
Priority List
Agreements for
Storage facilities

Activate Emergency
Plan Level II

CEO,
Government

Organize and instruct staff

Coordinator,
Instructor?

Close the museum to the
public

CEO,
Government

Evacuation of exhibition
objects basement, GF?

Emergency
Coordinator

Build temporary barriers

Emergency
Coordinator

All-clear or go on to level III

Emergency
Coordinator



SUGGESTION EMERGENCY PLAN LGNÖ

Level III

Defined Marker
for 194m, HK 300?
Emergency Plan III
Priority List
Agreements for
Storage facilities
Checklist Flooding
Basement

Activate Emergency
Plan Level III

Owner,
Government ?

Ev. Evacuation of special
objects in upper floors

Exhibition
manager?

flooding basement

Emergency
Coordinator, Fire
Brigade

Complete barriers outside

Emergency
Coordinator

go on to level IV

CEO, Exhibition
Manager



SUGGESTION EMERGENCY PLAN LGNÖ

Level IV

Priority List
Agreements for
Storage facilities
Logistics Plan

Longterm Storage

CEO, Exhibition
Manager

Create Access to the
building

Emergency
Coordinator,
Security Manager

Evacuation of objects in
upper floors

Exhibition
manager?

Organize transport and
storage

Exhibition
Manager,
Logistics Manager

Reset

CEO,
Government



Documents required

Defined Flood Markers

Exhibition adapted emergency plan for floods (levels I-IV)

Actual priority list for objects (exhibition related)

Agreements for external storage facilities

Checklist for flooding Basement

Logistic Plan for external storage

List of Personal equipment, package and transport



Inventory packing team

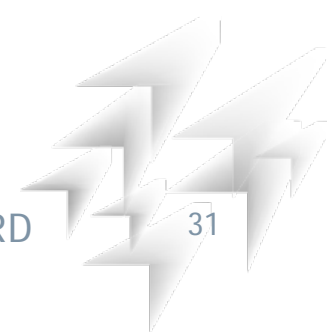
- It must be supervised by professional museum staff - curators
- Minimum 3 person per item - two person for handle and one for supervise and check list

Proposal for museum:

- prepare check list in advance
- Prepare grid line in planned room for evacuation

2 main location for museum items - exhibition showroom and depot

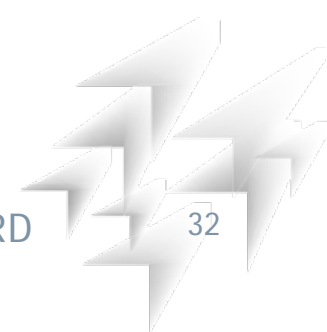
First going to depot for equipment and prepare transportation
Then go to the art pieces in the showroom and depot and pack them



Inventory checks in case of evacuation

- make label stickers in advance for each item
- put label sticker on packed item
- checking items in all phases of moving
- moving items to upper floor of museum building
- exit from museum building
- enter to new location of Kunsthalle
- exit from Kunsthalle
- enter to Vienna/Sankt Pölten depot

subject checking can only be performed by authorized personnel.



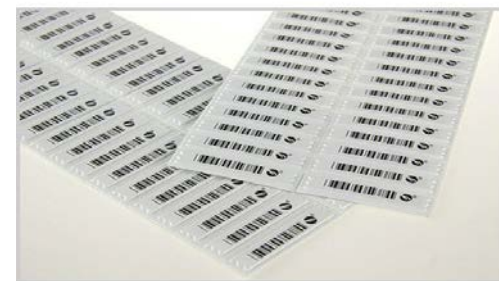
Packing Items



cotton gloves



air bubble film rolls



label stickers for Item



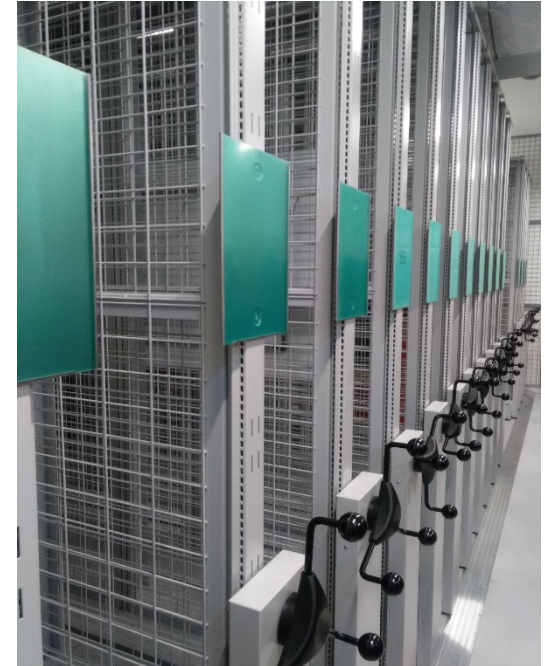
Given Infrastructure



Emir Isovic 2019.



Depot for packing equipment



Depot for paintings



Preparations for relocation



Transport trolley



Transport boxes and waterproof cases



Personal Equipment

Personal waterproof and security equipment



headlights
batteries



Vests



walkie talkies



gloves



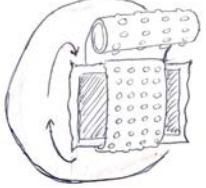
clothing for rain weather
condition



Packing and handling Instructions



Painting packing and handling instructions

For Volunteers

<p>Always listen to the instructions from the supervisor.</p> <p>Don't lose your time acting on your own to avoid chaotic situations.</p> 	<p>Use proper material to cover paintings before putting it in the box (bubble wrap etc.).</p> <p>Each painting has its original box. Your supervisor will tell you which is it.</p> 
<p>Use proper tools to remove paintings from the wall.</p> <p>Obtain tools from your supervisor.</p> 	<p>Put the painting vertically as shown in the picture.</p> <p>Secure the box with screws after placement.</p> 

Painting packing and handling instructions

For Volunteers

<p>Use charts for transporting heavier boxes.</p> <p>Box should be transported by two persons always. Try to avoid damaging the box.</p> 	<p>If necessary form a chain of handling.</p> <p>Suitable for smaller boxes. Try to be quick and not to disrupt other people in the chain.</p> 
<p>Always follow the way of evacuation.</p> <p>To avoid chaotic situation. It will be marked or explained to you by your supervisor.</p> 	<p>Check your equipment before going in.</p> <p>Especially the headlamp, boots vest and gloves.</p> 



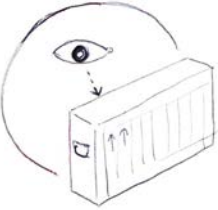



Emir Isovic 2019.

Check in and Check out Instructions

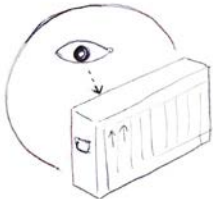

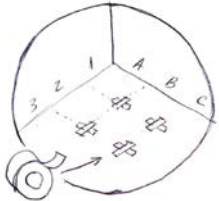

Painting handling and receiving instructions

For Check out from the Gallery

<p>Mark every box with its Identification Number.</p> <p>Use waterproof markers if necessary.</p> 	<p>Write down every item that you send away into the DATA SHEET EMERGENCY INVENTORING.</p> <p>Write down its number, condition, date, time and person who took it.</p> 
<p>Visually check every item last time, before it leaves the gallery</p> <p>Write down any damage, humidity or unusual condition.</p> 	<p>If transported to the truck, observe and assist the process.</p> <p>Be sure that items are handled correctly. Fill in the lists and take the signature of the persons/drivers you give the boxes.</p> 

Painting handling and receiving instructions

For Check in to new location

<p>Always visually check the box or item that is transported to you.</p> <p>Check for humidity, cracks or any visible damage.</p> 	<p>Fill in the Datasheet Object Arrival Form provided to you.</p> <p>Write every item your receive: Inventory nr., date, time, etc. in order to avoid forgetting or losing some items.</p> 
<p>Deposit the items in prearranged deposit. Write down the new location of every item into the Data Sheet (grid system).</p> <p>Use some tape to mark the quadrants.</p> 	<p>If necessary consider a new deposit place.</p> <p>But inform your superior first.</p> 



Emergency Inventorylist







DATA SHEET OBJECT ARRIVAL DEPOSIT TEMPORARY/FINAL





entry No:	Ident No.	Location normally origin (owner)	Notes	New location (grid system)	Delivered by	Received by	Date time
01							
02							
03							
04							
05							
06							
07							



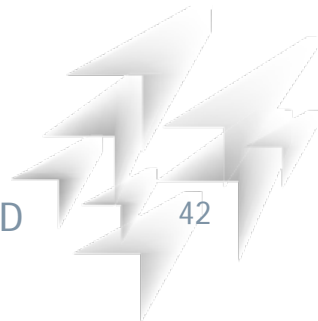
SUGGESTION EMERGENCY PLAN LGNÖ

PRIORITY LISTS, PLANS AND ROUTING CARDS

Cultural Property Protection State Gallery Lower Austria			Drafted: 11.07.19 Updated till: 11.07.19 Drafted by: SU 19	
LANDESGALERIE NIEDERÖSTERREICH STATE GALLERY OF LOWER AUSTRIA		Floor 1.UG	Room nr. 01	Inventory nr. 8016
Priority: 				
Object: Painting „empty frame“				
				
measurements: 70 x 50 x 5 cm weight: ca. 1 kg Height over floor: 0 cm		Temporary stocking: Kunsthalle Definitive stocking: Deposit Vienna Address, xx		
Persons: 2x 	Way to carry: 	Tools:		
Further information: • Standing freely				

Entrance Museum		Cultural Property Protection State Gallery Lower Austria			Drafted: 11.07.19 Updated till: 11.07.19 Drafted by: SU 19	
LANDESGALERIE NIEDERÖSTERREICH STATE GALLERY OF LOWER AUSTRIA		Floor 1.UG	Room nr. 01	Inventory nr. 8016		
Orientation plan						
Groundfloor			-1 floor			
						

QUESTION AND ANSWERS



WALKTHROUGH

Take a stroll through the museum and test...

